

A photograph of three people sitting on the stone steps of an ancient amphitheater. A woman on the left is looking at a laptop. A man in the middle is looking at a tablet. A woman on the right is looking at a tablet. The steps are made of large, weathered stone blocks and curve away into the distance.

*Master of Science in
Restorative & Aesthetic Dentistry*

Online

Face to Face

Hands-on

Together

Prospectus



Foreword

Dear Colleagues,

I have spent the past fifteen years lecturing and teaching restorative and cosmetic dentistry in the Middle East. As I am now reaching the twilight of my practicing career I would like to be more involved in the dissemination of knowledge. I have accepted to be the course co-ordinator for two of the UKs most respected education and academic organisations (Smile-on Ltd and The University of Manchester) who have joined forces to provide an innovative, technology driven MSc in restorative and aesthetic dentistry.

It is a great opportunity for practicing dentists who cannot or are unable to attend a full time postgraduate course for a variety of reasons. The participants will have the 'best of everything' - lecturers, online technology, live sessions and support.

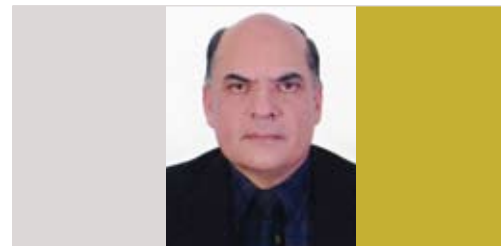
Manchester's School of Dentistry is consistently rated as the top dental school in the UK for innovative teaching.

The programme provides a unique opportunity for dentists throughout the world, especially *in our region* to earn a Master of Science degree in restorative and aesthetic dentistry from one of the top 25 universities in the world. Our course tutors are some of the top professors from around the world. Many of you will have attended lectures and courses provided by Prof. Nasser Barghi, who is one of our course leaders.

Nasser Barghi is well known throughout the world for his concepts and knowledge in adhesive and restorative dentistry.

As a practitioner, teacher and faculty member I strongly recommend this programme to you.

Prof. Dr. Asmat Lone
Course Co-ordinator



Introduction



The Best of Everything

This is the home of the UK's first online postgraduate degree in restorative and aesthetic dentistry. Two of the UK's most respected education and academic organisations have joined forces to provide an innovative, technology driven MSc in restorative and aesthetic dentistry. This programme brings together a high class international faculty for a modern and global classroom. Smile-on, the UK's pre-eminent healthcare education provider and The University of Manchester, one of the top 25 universities in the world, have had the prescience to collaborate in providing students with the best of everything — lecturers, online technology, live sessions and support. This programme is more than just an online learning experience. Students will be able to communicate with a diverse multi-ethnic global community of peers with whom they will also share residential courses in fantastic settings.

The main aims of the course are to:

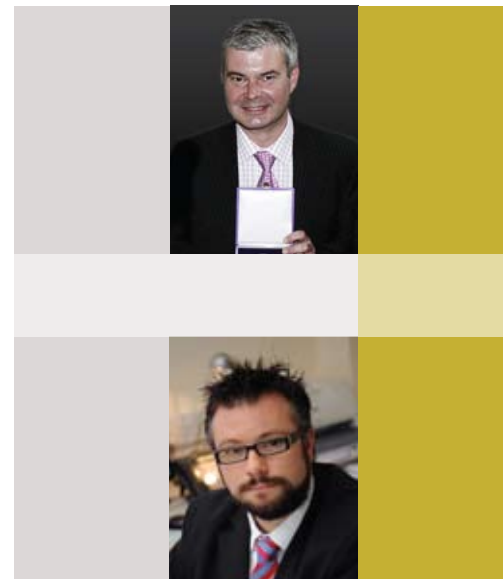
- Provide an innovative programme which enhances current knowledge and clinical skills in aesthetic restorative dentistry
- Present sound academic theory and high quality practical training in aesthetic concepts by world class mentors
- Provide students with the confidence and ability to enhance their current clinical practice by incorporating the latest advances in technology and research ensuring aesthetic, functional and long lasting restorative care
- Deliver learning using the latest technology enabling students to access the course regardless of place or time zone whilst maintaining their dental practices

Prof. Nick Grey, Head of School of Dentistry, Manchester

BDS, MSc, PhD, DRD, MRD, FDSRCSEd, FHEA, Head of School of Dentistry/ Professor of Dental Education. Nick is currently head of the school of dentistry and his main role is in teaching. He is a specialist in restorative dentistry and as such has a major role in overseeing the treatment planning and progression of final year clinical cases. In his time as head of school, the research team have been ranked first amongst all dental schools in the UK in the recent RAE 2008. The school has had unparalleled success in teaching in 2008/2009; a historic 100% success in the final year examinations, top ranking in the national student satisfaction survey and top ranked school in the Guardian league tables.

Dr. Iain Pretty, Course Director and Tutor, Manchester

BDS(Hons), MSc, PhD, MPH, MFDSRCS (Ed), Director of Graduate Education, Senior Lecturer and SpR in Dental Public Health. Iain joined the school of dentistry at The University of Manchester in 2002 as a clinical teacher and then spent a year as a research fellow at the dental health unit. His research interests lie in the assessment of diagnostic methodologies in dentistry and the current focus of this work is early caries detection. Iain is a Department of Health (NIHR) Clinician Scientist and as such much of his time is spent delivering a series of research projects concerning water fluoridation.



Faculty



Prof. Nasser Barghi, Course Leader and Tutor

Nasser is professor and head of the division of esthetic dentistry in the department of restorative dentistry at the University of Texas Health Science Centre at San Antonio Dental School. He is past president of the American Equilibration Society, holds membership in many professional dental organisations and has authored/co-authored over 185 articles and abstracts for journals. Prof. Barghi has completed a great amount of research on bonding and etched porcelain bonded restorations, and has lectured extensively worldwide on the topic of aesthetic dentistry.



Dr. Kevin Lewis, Course Leader and Tutor

During 20 years in full time practice and 10 further years practicing part-time, Kevin developed special interests in preventive dentistry and practice management, has written 2 textbooks on dental practice management and has been the associate editor of Dental Practice since 1981. He lectures intensively all over the world, including 5 FDT World Dental Congresses since 1995. Kevin has been involved with Dental Practice since 1989, initially on the Board of Directors, then as a dento-legal adviser, before being appointed Dental Director in 1998. In 2003 he became a member of the Council of the Medical Protection Society.



Prof. Nigel Pitts, Course Leader and Tutor

Nigel's broad range of qualifications include a PhD in computer-aided dental radiographic diagnosis, fellowships from the Royal Colleges of Surgeons in London and Edinburgh, the Royal Society of Edinburgh, and from the FGDP (UK). Nigel is the recipient of several prestigious awards and has worked intensively around the world. He is a leading member of the International Association for Dental Research, the European Organisation for Caries Research, the European Association for Dental Public Health (President) and the British Association for the Study of Community Dentistry. He was chair of the UK Commissioning Group for a 5 million pound National Health Service Research and Development Programme in Dental Primary Care in 1997 and a member of the 2001 Clinical Dentistry RAE Panel.

Prof. Liviu Steier, Course Leader and Tutor

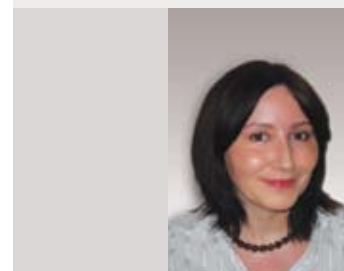
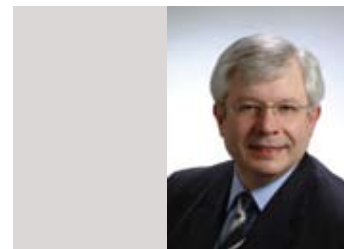
Prof. Liviu Steier is a specialist in endodontics (GDC), a specialist for prothetik (DGZPW), visiting professor at Tufts School of Dental Medicine (Boston, USA), the University of Florence (Italy) and associate clinical professor at Warwick Medical School where he chairs the newly established MSc in endodontics programme. He is well published and is on the editorial team of Reality Esthetics and editor in chief of Reality Endo. He is a director of over 200 CE programmes. As well as lecturing internationally he also has private practices in Germany and England.

Prof. Eddie Scher, Course Leader and Tutor

Eddie is a specialist in surgical dentistry and prosthodontics and runs a private practice in central London. He has been a pioneer in implant dentistry in the UK and has been placing dental implants since 1986. For 17 years he has trained general dentists in implantology. Eddie lectures worldwide and has published extensively in refereed journals. He has also been the scientific chairman at several ADI and ICOI congresses.

Nola Mather, Education Programme Manager, Smile-on

Nola has 10 years experience implementing training programmes, most recently as business support manager for a company specializing in healthcare training. She has an extensive background organising European-wide training events, using her training and competency experience to implement policies and procedures, including organising daily, weekly and large annual training events for over 1,000 people per subject. She is well practised in identifying training needs, and interpreting new regulations and directives to produce new materials and roll-out new training schedules to ensure the audience receive effective training and continue to maintain their competence.



Course Overview



Unit 1:

Foundations of 21st Century Practice

1. Anatomy
 2. Basic disease processes
 3. Current concepts in diagnosis
 4. Foundational occlusion
 5. Foundations of material science
 6. Imaging and radiology
- 150 Hours/15 credits**

Unit 2:

Aesthetic Foundations

1. Comprehensive patient assessment
 2. Patient communication
 3. Record keeping
 4. Clinical photography
 5. Treatment presentation
 6. Medico-legal aspects
 7. Practice management
 8. Anterior aesthetic treatment planning
 9. Colour and shade
- 150 Hours/15 credits**

Unit 3:

Anterior Aesthetics

1. Bleaching
 2. Anterior direct composite
 3. Aesthetic recontouring
 4. Simple orthodontics
 5. Restoration of the endodontically treated tooth
 6. Veneers
 7. Sliced veneers/ $\frac{3}{4}$ crowns
 8. Crowns
- 300 Hours/30 credits**

Unit 4:

Posterior Aesthetics

1. Direct composite
 2. Inlays/onlays
 3. Crowns
 4. Bridges
- 150 Hours/15 credits**

Unit 5:

Complex Treatment

1. Tooth loss
 2. Removable replacement
 3. Fixed replacement
 4. Treatment planning tooth replacement
 5. Periodontal plastic surgery
 6. The role of orthodontics
 7. Restorative gingival techniques
 8. Treatment planning complex cases
 9. Delivery of complex cases
 10. Interdisciplinary treatment
- 300 Hours/30 credits**

Unit 6:

Research Methodology

1. Research methodology
 2. Statistics
- 150 Hours/15 credits**

Unit 7:

Dissertation

600 Hours/60 credits

Total hours/credits

1800 Hours/180 credits

Methods of Study & Assessment

Methods of Study

Part-time distance learning

The majority of the learning resources will be online. The programme will combine interactive distance learning, webinars, live learning and print to create an integrated learning programme, using the best of new media and technology.

Ownership

The programme is designed to encourage the student to take responsibility for his/her own learning. The emphasis is on a self-directed learning approach.

Residential

The type of teaching will be distance online self-directed learning. In addition, activities on this programme will be supplemented by attendance at residential courses to complete the hands-on portions of the course.

Methods of Assessment

- Multiple choice questions administered after live/distance and interactive lectures
- Documentation and pictures submitted for assessment for competency cases
- Documentation and pictures submitted for assessment for clinical cases
- Individual assessment by Aesthetic Master's Faculty to demonstrate clinical competency and theoretical mastery.



Admission Criteria & Technical Requirements



Admission Criteria

Candidates must be able to satisfy the general admissions criteria of both the university and the school.

Applicants must:

- Provide evidence of their primary dental qualification from a recognised institution
- Have at least 2 years experience in general professional practice
- Where the first language is not English, produce a copy of either an IETLS certificate (score must be no less than 6.5, with no less than 6 in the written component) or a TOEFL certificate (score must be no less than 575 on the paper-based test, 230 on the computer-based test or 90 on the iBT test)
- Provide 2 academic references - both must be signed, dated and on headed paper and both must be no more than 12 months old or they will not be accepted
- Provide copies (not originals) of degree certificates and official academic transcripts of previous study showing the subjects taken and grades obtained. (If these are in a language other than English official translations must be provided)

Technical Requirements

Content must be viewed at a screen resolution of 1024 x 768, or higher, using a 24-bit colour setting.

You are required to have broadband or a high speed connection (DSL, Cable, T1 etc), a soundcard and headphones or speakers.

You must use one of the following supported browsers: Microsoft Internet Explorer 6 or above; Mozilla Firefox 2 or above; Safari 1 or above for Mac. Additionally, you must have Adobe Flash Player 8 or above installed. Live net meetings will be conducted using Adobe Connect, you will need to have a microphone and webcam installed to participate.

Operating System

Minimum: Windows XP (sp2)/
MAC OS X

Recommended: Windows Vista/
Mac OS X v10.4

Processor

Minimum: 500 MHz
Recommended: 1GHz

RAM

Minimum: 256 MB
Recommended: 1GB

Smile-on Ltd

The company was incorporated in 2000 under the name of Smile-on Holdings Ltd. It changed its name to Healthcare Learning Company Ltd ("HLC") in September 2005 but has continued to use "Smile-on" as its trading name. HLC has succeeded in establishing itself as a provider of interactive teaching and online courses for healthcare professionals to meet their Continuing Professional Development (CPD) and postgraduate requirements throughout their careers. HLC adopts an integrated or blended approach to education and produces interactive modules and online courses as well as organising seminars/conferences and publishing printed periodicals. HLC also works in alliance with existing healthcare learning institutions, leading academics and practitioners with the aim of producing the most current learning in the most accessible way. HLC publishes weekly online newsletters and Dental Tribune - the UK's first and only weekly printed newspaper for dentists. These publications are dedicated to the educational needs of healthcare practitioners and professionals.

The University of Manchester

The University of Manchester has a rich academic heritage and can lay claim to more than 23 Nobel Prize winners amongst its current and former staff and students. The Manchester Dental Hospital opened in July 1883 at 98 Grosvenor Street, the hospital's principal objective was to relieve the suffering of the poor, an aim made easier to meet by the practitioners, who worked without financial reward. Consistently rated as one of the best dental schools in the UK, the School of Dentistry's mission is to be a community focused on world-class developments in oral healthcare, research and education. The strength of the dental school's teaching was recognised by the latest government review, when the School was awarded maximum points with special commendation for the quality of its student support and guidance, IT infrastructure and the use of problem-based learning. With world-leading researchers in basic dental science and health-services research there are plenty of opportunities for research at MPhil and PhD levels. In addition, there are flourishing postgraduate clinical training programmes coordinated by leading dental specialists and researchers.



Contact Prof. Dr. Asmat Lone
Course Co-ordinator

t: +97 126 216063

f: +97 126 335568

e: lone@emirates.net.ae

w: www.smile-on.com/msc

or <http://www.dentistry.manchester.ac.uk/postgraduate>

Asmat Dental Medical Centre
Behind Chamber of Commerce
Corniche
P.O. Box 26374
Abu Dhabi
United Arab Emirates